

REGULATION
of
INSTRUCTIONS & GUIDELINES

Type Approval For
Radio & Telecommunications Terminal Equipment
R&TTE

Approved by Commissioners' Board decision

No./43/ dated 28/8/2021

Syrian Arab Republic

Syrian Telecommunication & Post Regulatory Authority

P.O.box 12011, Damascus

SY-TPRA© All rights Reserved

www.sytra.gov.sy

INDEX

Article -1- Objective

Article -2- Equipment identified in need of type approval.

Article -3- R&TTE type approval Procedures.

Article -4- R&TTE type approval certificate renewal Procedures

Article -5- Procedures of dealer registration.

Article -6- Entities that can apply for type approval

Article -7- Fees.

Article -8- Type Approval Label.

Article -9- Telecom Equipment that need SY-TPRA approval for importing without the
need for Type Approval

Article -10- Final Provisions

Article -1- Objective

Issuing Guidelines of Type Approval Procedures for R&TTE that may be used inside Syrian Arab Republic, without causing radio interference or damage to the telecom networks, and without affect badly public health, safety, environment or national security.

Article -2- Equipment identified in need of type approval

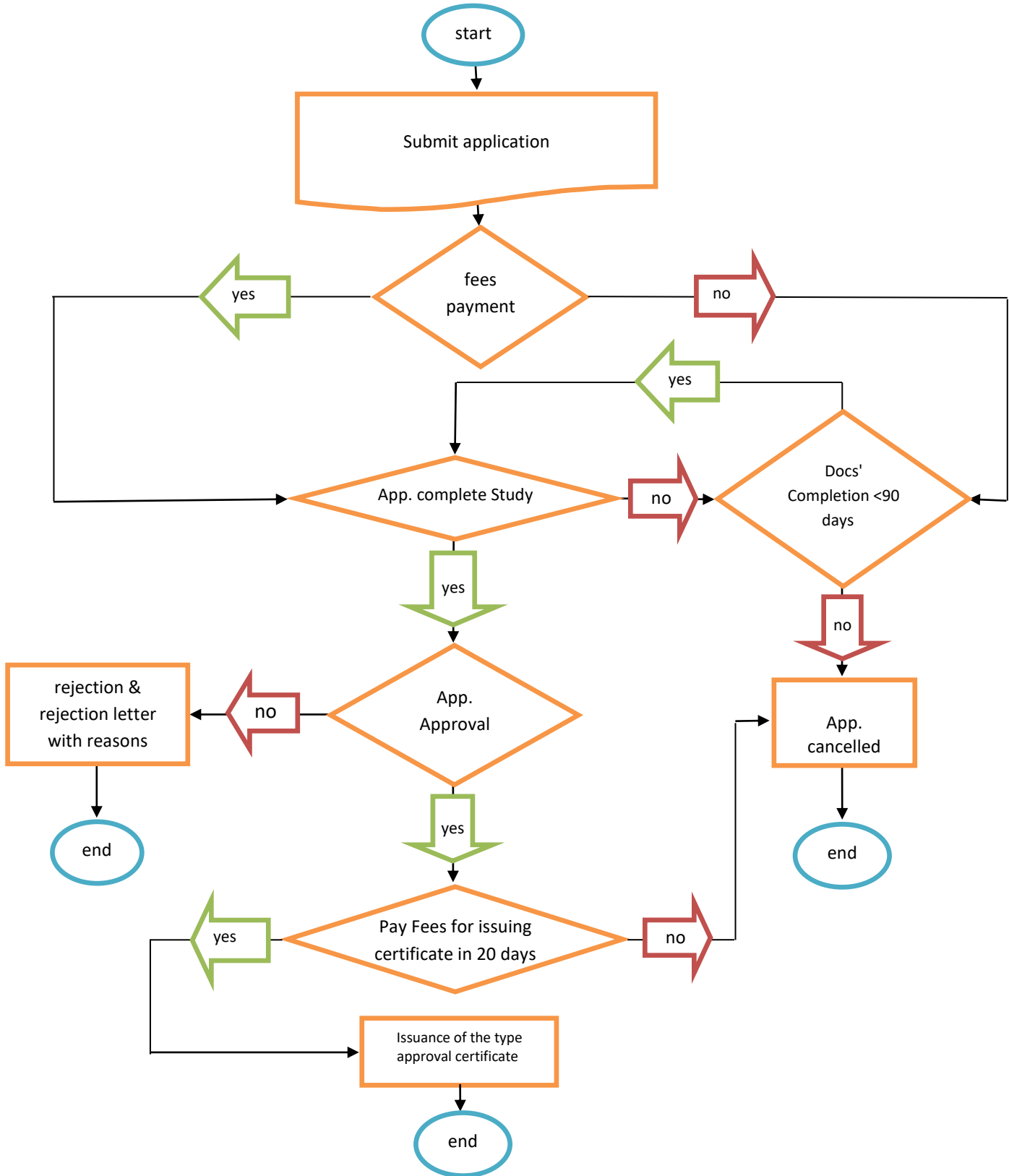
R&TTE “equipment that use radio frequency spectrum, and telecommunication terminal equipment” are all subject to type approval regulation.

Article -3- Type Approval Procedures

1. Apply according to the form approved by SY-TPRA.
2. Applicant is subject to the provisions of Article 7 “dealer registration” in the regulation “Type Approval Policy”
3. Documents that must be submitted with the application:
 - a. Declaration of Conformity.
 - b. Proof of payment for the prescribed Type Approval fee
 - c. Basic technical specifications of the equipment.
 - d. Technical/operational documentation in Arabic or English, (detailed technical description of the equipment – operational instruction - box chart....)
 - e. Test reports according to the equipment type, such as (RF for radio communication equipment, EMC “electromagnetic compatibility”, Safety)
4. As for mobile terminal, the International Mobile Equipment Identity IMEI, must be registered in GSMA database.
5. A sample of the R&TTE equipment should be accompanied, in the cases defined by SY-TPRA, for inspecting, testing and matching with the equipment imported later to Syria from the same type, provided that it is returned to the dealer after the test is completed; considering the following:
 - a. The type approval applicant, may clearly submit a request to import a sample for its type approval.
 - b. In case of its rejection, the dealer is obligated to dully export the sample.

- c. The supplier is responsible for any illegal change on imported equipment, and SY-TPRA has the right, at any time, to inspect equipment's compliance with the type approved ones.
6. The period for processing the request for type approval is 20 working days. The period begins when all the requirements, deemed necessary, are submitted.
7. In case of approval, a Proof of payment for the prescribed Type Approval certificate issuance fee is required.
SY-TPRA will issue a three - year valid certificate, considering the day and month of issuance. This certificate is renewable, according to SY-TPRA evaluation, and according to a formal request submitted by the concerned person.
8. In case that the equipment doesn't conform with the technical conditions and requirements, SY-TPRA will reject the type approval request, and will formally inform the applicant by a letter explaining the reason of rejection.
9. The request for type approval will be cancelled in case of not completing all the procedures in a time limit of 90 days, starting from the date of submitting the application.
10. Concerning the entities that would like to hold a type approval certificate approved equipment, SY-TPRA will issue a certificate for the remaining period up till the expiry date of the original one, and with the prescribed type approval certificate issuance fee.

The blocking diagram outlining procedures of type approval process:



Article -4- Type Approval Certificate renewal:

- 1- The request for type approval certificate renewal must be submitted within the last three months of its validity period.
- 2- In case of not applying within the period mentioned above, the prescribed fees of a new request will be applied.
- 3- The two above mentioned procedures are applied on the new applicants for type approval, starting from the validity date of this regulation.
The certificate holders, before the validation date of this regulation, have a period of two months after the validation date to submit their renewal request paying the prescribed fees in annex 1.

Article -5- Dealer Registration procedures:

- 1- Apply according to the form approved by SY-TPRA
- 2- Documents that must be submitted with the application:
 - a. A certified copy of the applicant's commercial or industrial register, or a valid dealer registry.
 - b. A copy of the applicant's identity card or passport.
 - c. A payment proof of the prescribed fees for the request.
- 3- Registration shall be made in SY-TPRA. Each dealer will be assigned a "permanent dealer registration number", and the certificate will be issued with a renewable validation period of four years.
- 4- The request for certificate renewal, must be applied within the last three months of its validation period.
- 5- In case of not applying for the certificate renewal during the allowed period, the certificate will be suspended, until the dealer submits for renewal, and the prescribed fees for a new registration will be applied.
- 6- The two above procedures are applied on the new registry applicants, starting from the validity date of this regulation.
The registry holders, before the validation date of this regulation, have a period of two months after the validation date of this regulation, to submit their renewal request, paying the renewal prescribed fees in annex 1.

Article -6- Entities which can apply for type approval

They include but not limited to:

- 1- International & local manufacturers.
- 2- Licensed operators.
- 3- Companies & dealers that import telecommunication equipment.
- 4- Manufacturers' commercial agents.
- 5- companies or agents specialized in following up procedures for type approval certificate issuance, on behalf of a third party.
- 6- Other entities accepted by SY-TPRA

Article -7- Fees:

1. Non-refundable fees are charged by SY-TPRA, to cover administrative expenses for processing applications. Fees may be updated by SY-TPRA, without prior notification according to table -1- in annex -1-.
2. Each type approved piece of imported equipment with IMEIs, is subject to non-refundable fee upon entry declaration, this fee is charged for the costs incurred by SY-TPRA, according to table -2- in annex -1- .

Article -8- Type approval Label:

1. All Type Approved equipment must have a single-use type approval label, clearly affixed to the device on the packaging or in the user manual, such label will inform the consumer that the device holding this label is type approved by SY-TPRA.
2. Software version of the telecom devices may include the type approval label approved by SY-TPRA.
3. When designing the type approval label, the characters shall be written in black print with a white background, as follows:
 - a. for dealers registered in SY-TPRA:

<p>SY-TPRA TYPE APPROVAL REGISTERED No: xxxxxxx-yy DEALER No: xxxxxxx-yy</p>

b. b- for foreign companies:



2. Systems' interfaces, and previously embedded units into imported equipment, are excluded from affixing type approval label.
3. SY-TPRA has the right to add new features to the label as appropriate.

Article -8- Telecom equipment that need SY-TPRA approval for importing, without Type approval

SY-TPRA has the right to ask the importers to affix the label below to telecom equipment that need its approval for importing, with no need to be type approved.

These equipment should be able to be type approved, and should conform to technical requirements needed to work properly in Syria, without causing any radio interference or negatively affect the public telecom networks.

In certain cases defined by SY-TPRA, a sample of these equipment must be accompanied to be tested, examined and conformed with the later imported equipment from the same type. These samples are to be returned to the importer when SY-TPRA has no need of them.



SN: a 12-digit serial number, special for SY-TPRA

SY-TPRA will issue these labels at the expenses of the equipment's owner, and it has the right to add new features on them, as appropriate.

The following are exempted from pasting the label

- 1- Equipment accompanied by a traveler for personal use.
- 2- Imported equipment for governmental entities and international organizations, for non - commercial issues.

Article -9-: Final provisions:

- 1- This regulation replaces the previous regulation approved by the commissioners' board decision No/15/ dated 3/8/2017
- 2- In case of violation of this regulation, related regulations will be applied (sanctions - penalties – fines - ...) mentioned in the Applicable Regulatory Framework.
- 3- SY-TPRA has the right to exclude certain equipment types from type approval regulations, to be published it on its web site.
- 4- In coordination with the concerned bodies, SY-TPRA has the right to exclude certain telecom equipment from obtaining SY-TPRA approval for entrance. This will be published on SY-TPRA website.

Annex -1-

Table -1-

Reg. type	Application type	Fees	Applicant	payment	
T.A. Registration	New request	equals 300 euro in Syrian pounds for mobile phone	Local dealer	On registration	
		equals 150 euro in Syrian pounds for other devices			
		300 euro	Foreign company		
	Issuing T.A. certificate	equals 100 euro in Syrian pounds for mobile phone	equals 50 euro in Syrian pounds for other devices	Local dealer	Before Issuing T.A. certificate
		Modifying T.A. certificate	equals 100 euro in Syrian pounds for mobile phone	equals 50 euro in Syrian pounds for other devices	
	100 euro				Foreign company
	Renew T.A. certificate		equals 300 euro in Syrian pounds for mobile phone	equals 150 euro in Syrian pounds for other devices	Local dealer
		300 euro			
		Reproduce T.A. certificate (spoilt – lost)	equals 50 euro in Syrian pounds for mobile phone	equals 25 euro in Syrian pounds for other devices	Local dealer
	50 euro				

Reg. type	Request type	fees	notes	Payments
Dealer registry	New	equals 250 euro in Syrian pounds	-	On registration
	modify	equals 100 euro in Syrian pounds	Administrative information modification	
	renew	equals 200 euro in Syrian pounds	-	
	Reproduce (spoilt-lost)	equals 50 euro in Syrian pounds		

Table -2-

The charged fee by SY-TPRA for each type approved equipment that has an IMEI identifier	1.65 \$ USD
---	--------------------